

Top Stories This Week

- Government launches PSB revamp plan 'Indradhanush'. Announces 7 elements to reform PSU banks include appointments, bank boards, capital, de-stressing, empowerment, framework of accountability & governance reforms.
- Cipla Q1 -Consolidated net profit at Rs 651 crore versus Rs 294.6 crore (YoY). Consolidated total income up 41.6 percent at Rs 3,852.8 crore versus Rs 2,720 crore (YoY).
- Birla Corp to acquire Jogobera & Sonadih Cement business from Lafarge for Rs 5,000 crore.
- Eicher Motors: Royal Enfield Announces Direct Distribution Arm In North America.
- DLF sells four acre land parcel in Kochi for Rs 111 cr.
- Mines Secy Says States To Put 82 Blocks For Auction By October-November: PTI
- RBI Grants In-principle Approval To 11 Applicants For Payments Banks including AB Nuvo, Reliance Industries, Tech Mahindra, Dilip Shanghvi (SunPharma), Cholamandalam, Airtel M Commerce Services Limited, Department of Posts, Fino PayTech Limited, NSDL, Vodafone m-pesa Limited, Vijay Sharma (PayTM).
- Infosys announces Aikido, says-Aikido Is Next-Gen Services In Design Thinking, Platforms, Knowledge-based IT

Weekly Indices Change

Index	Close	P. Close	Chg. (%)
SENSEX	27366	28067	-2.50
NIFTY	8299	8518	-2.57
MIDCAP	11216	11453	-2.07
SMLCAP	11610	11766	-1.33
METAL	7400	7806	-5.20
OIL&GAS	9149	9507	-3.77
AUTO	18795	19461	-3.42
TECK	6318	6397	-1.23
BANKEX	20687	21488	-3.73
IT	11627	11621	0.05
FMCG	8010	7923	1.10
HC	18440	18058	2.12
PSU	7158	7414	-3.45
CD	11421	11264	1.39
POWER	1941	2012	-3.53
CG	17384	17955	-3.18
REALTY	1300	1429	-9.03

Global Indices

DOW	16459	17477	-5.82
NASDAQ	4706	5048	-6.77
FTSE	6187	6550	-5.54
NIKKEI	19435	20519	-5.28
HANGSENG	22409	23991	-6.59

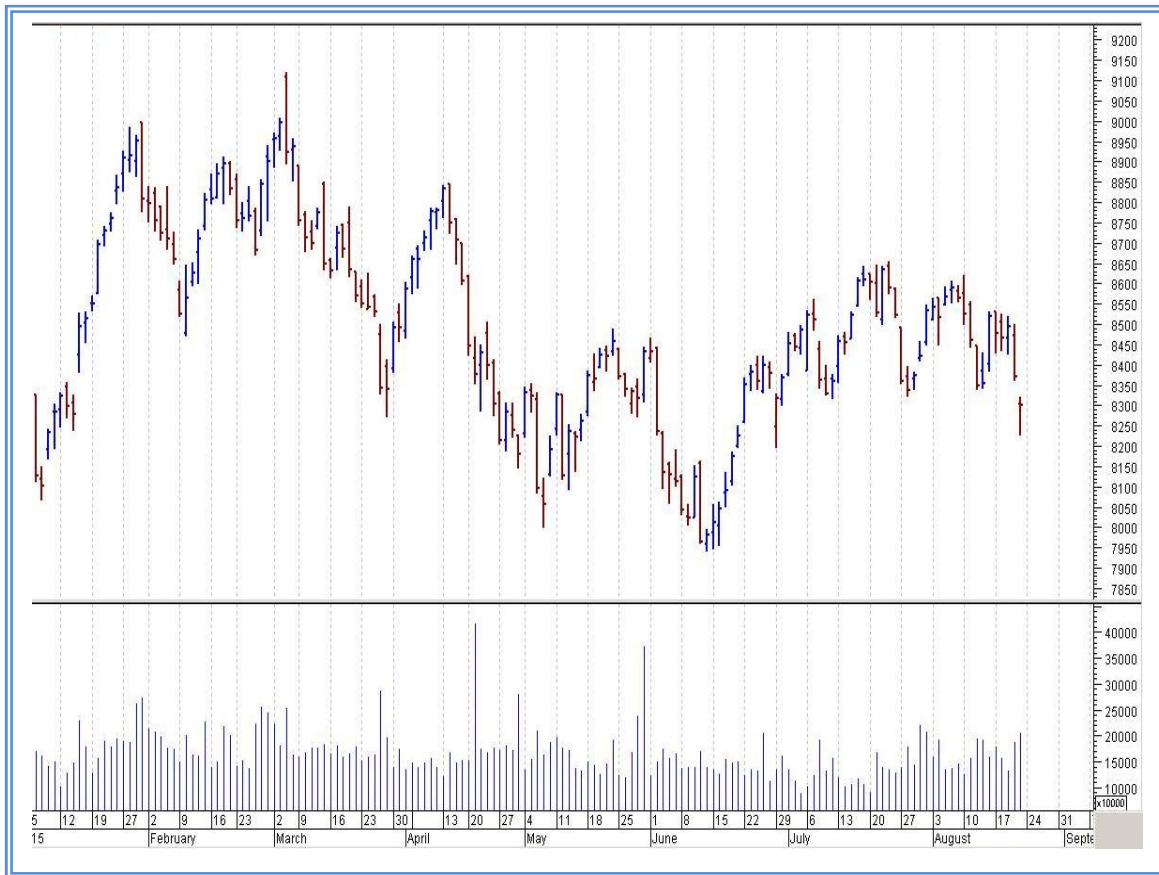
Top Gainers Weekly

Scrip	Price	% Chg
AXISCADES Engineer	318.45	22.34
Tata Elxsi Ltd.	2059.15	20.85
Ceat Ltd.	1169.65	20.75
Glenmark Pharma	1226.80	18.61
Intellect Design	192.85	17.23

Top Losers Weekly

Scrip	Price	% Chg
Amtek Auto Ltd.	64.35	57.66
TRF Ltd	281.20	24.12
Central Bank	80.70	21.54
Vedanta	94.60	16.91
Indiabulls Real Estate	56.30	13.05

Nifty Corner



Support & Resistance						
S3	S2	S1	Nifty	R1	R2	R3
8000	8150	8200	8299	8350	8450	8550
Moving Averages						
20DMA		50DMA		100DMA		200DMA
8485		8345		8405		8425

Market Commentary

Weakness in global stocks triggered by concerns about slowdown in China's economic growth weighed on Indian equities in the week ended 21 August 2015. China's decision last week to devalue its yuan has intensified investor concerns that weakness in the world's second-largest economy will crimp global economic growth. The barometer index, the S&P BSE Sensex, fell below the psychological 28,000 mark. Key indices fell in four out of five trading sessions of the week. For the next week nifty likely to trade in the range between 8350 - 8450 in the upper side and 8200 – 8150 in the lower side.

Stocks at 52 wk High

Scrip	Cmp
Amara Raja Batt	1073.25
Ceat	1169.65
Divis Labs	2439.90
Glenmark	1226.80
Jubilant Life	369.15

Stocks at 52 wk Low

Scrip	Cmp
Adani Power	25.65
Cairn India	141.70
GAIL	311.35
ONGC	255.95
Tata Motors	332.40

FII Activity

Date	Figures in crore
17/08	142.34
18/08	-255.42
19/08	-423.72
20/08	-1007.26
21/08	-2340.6
NET	-3884.66

DII Activity

Date	Figures in crore
17/08	183.72
18/08	127.50
19/08	383.32
20/08	567.87
21/08	1524.10
NET	2786.51

Weekly Stock Idea

Scrip	B/S	Cmp	Tgt
TATACOMM	B	418	435
HINDALCO	B	86	95
BATAINDIA	B	1120	1165
SMARTLINK	B	109	135
DLINKINDIA	B	179	195

Buy on dips & Sell on rise with Stop-loss of 3%

Volume Breakout Stocks

Scrip	Cmp
Just Dial	917.05
NTPC	123.40
Oil India	455.85
Bajaj Auto	2406.20
Central Bank	80.70

Week Ahead

MAJOR RESULTS/AGM MEETING THIS WEEK:

25 AUG: HERCULES

26 AUG: CMAHENDRA

27 AUG: TRF

28 AUG: ANDHRACEMT, SANGHI IND, NET4, CANDC, ADHUNIK

VISIT US AT: WWW.INDIRATRADE.COM

Disclaimer

This report is for private circulation within the Indira Group. This report is strictly confidential and for information of the selected recipient only and may not be altered in any way, transmitted to, copied or distributed, in part or in whole, to any other person or to the media or reproduced in any form. This report should not be construed as an offer or solicitation to buy or sell any securities or any interest in securities. It does not constitute a personal recommendation or take into account the particular investment objectives, financial situations, or any such factor. The information, opinions estimates and forecasts contained here have been obtained from, or are based upon, sources we believe to be reliable, but no representation of warranty, express or implied, is made by us to their accuracy or completeness. Opinions expressed are our current opinions as of the date appearing on this material only and are subject to change without notice.